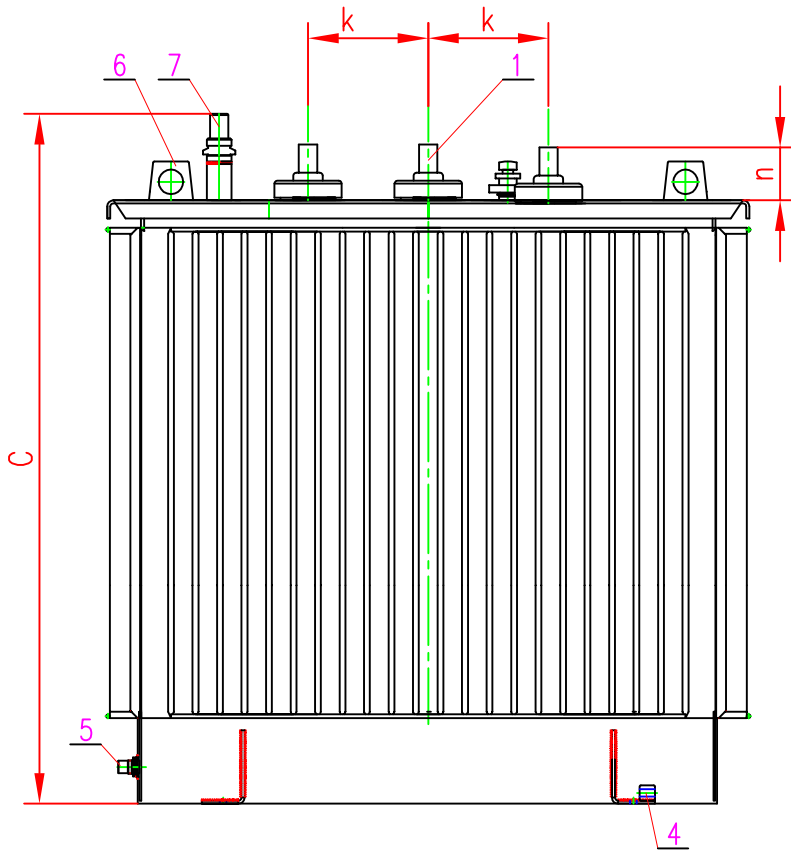
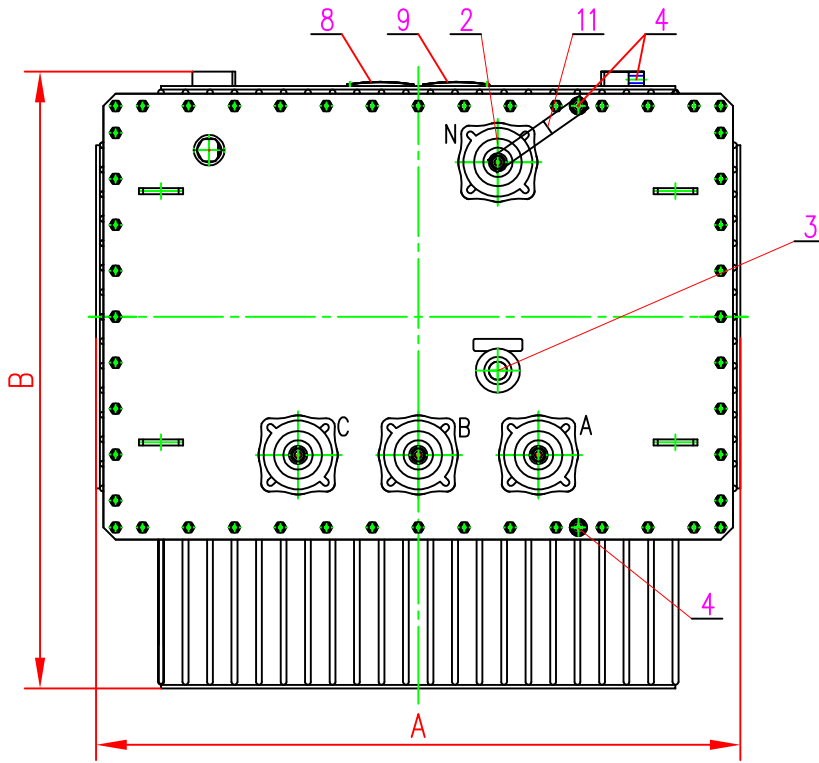


SUBcomp 20.5 25-50



1. H.V. Phase Plug-in bushing
2. H.V. neutral Plug-in bushing
3. Tap changer on Reactor
4. Earthing terminal
5. Oil drain valve
6. Lifting lugs
7. Oil level indicator
8. Diagram plate
9. Rated plate
10. Neutral to earthing connector
- 11.

kVA	A	B	C	d	e	g	l	m	k		n		Mass(kg)	
									H.V.	L.V.	H.V.	L.V.	Oil	Total
—	970	960	1150	—	—	—	—	—	260	—	108	—	380	1550